

ENLARGED
UTERUS DUE
TO
LEIOMYOMA

NORMAL SIZED
UTERUS IN
REPRODUCTIVE AGE

Atrophic
Postmenopausal
uterus



Leiomyoma

Normal uterus for comparison

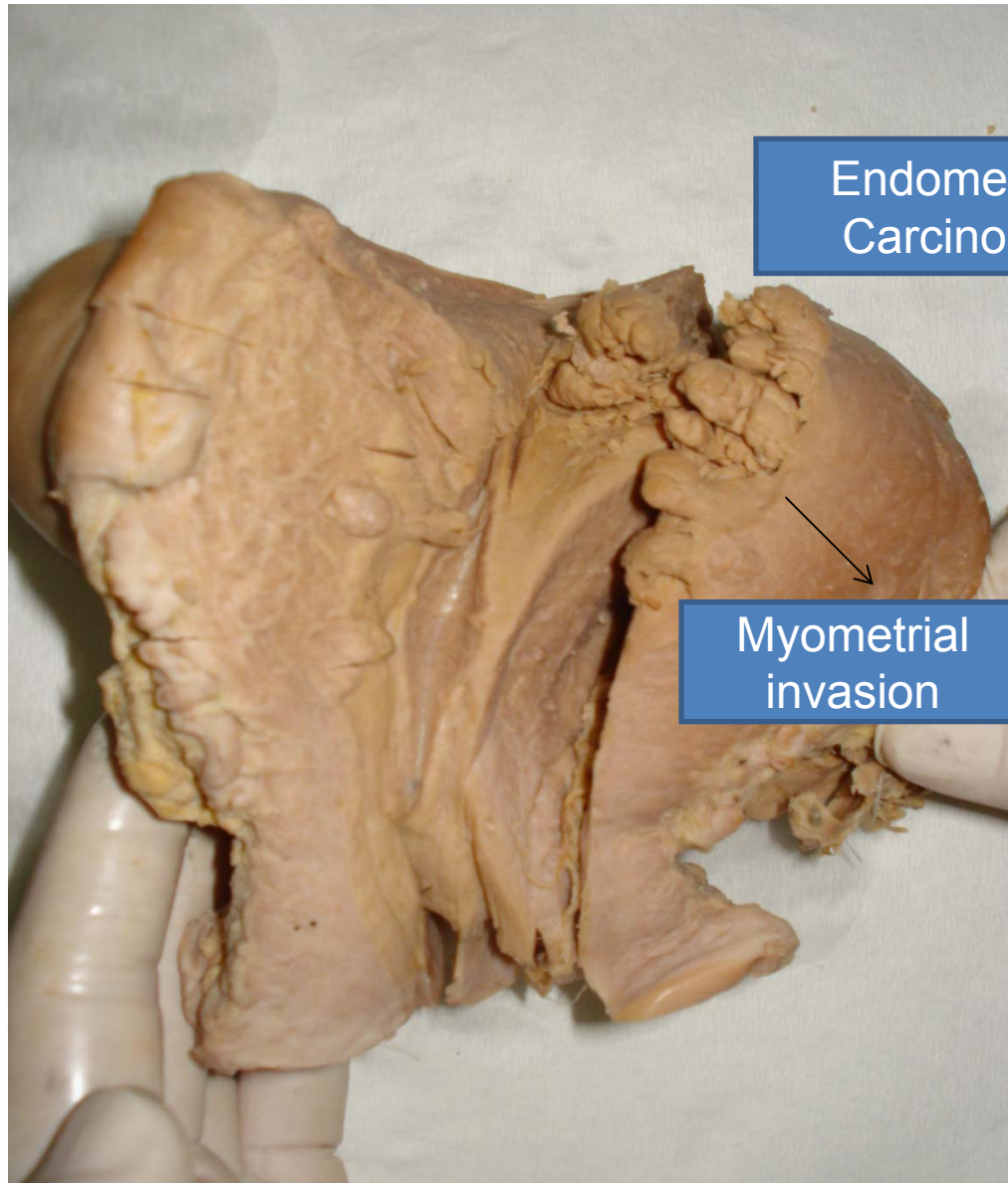




Adenomyosis

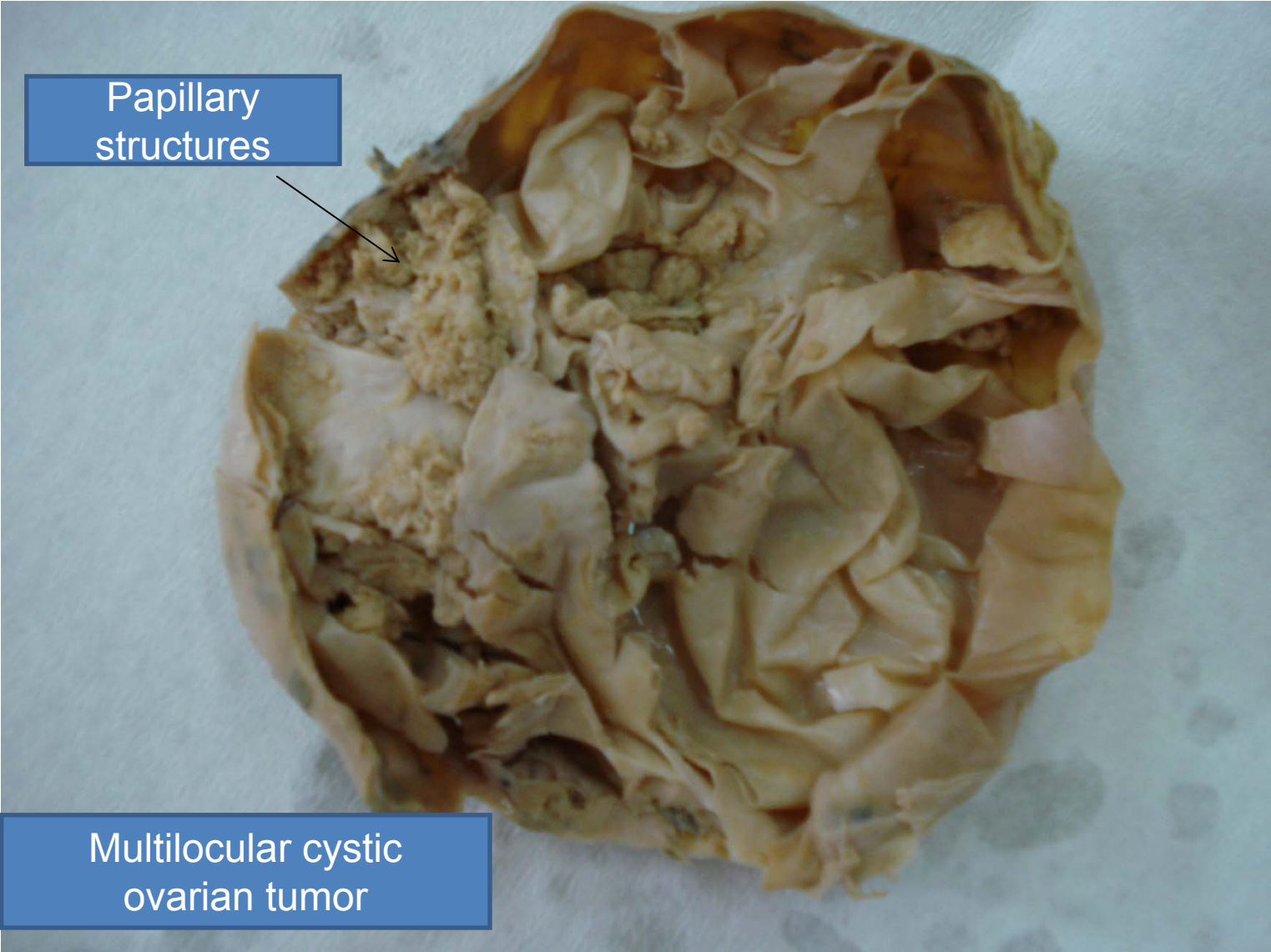


Endometrial carcinoma




Endometrial
Carcinoma

Myometrial
invasion



Papillary structures

Multilocular cystic ovarian tumor



Solid
and cystic

The image shows a gross specimen of an ovarian carcinoma, characterized by its heterogeneous appearance with both solid and cystic components. The tumor is contained within a translucent plastic bag. The solid areas are pale and fleshy, while the cystic areas are more gelatinous and translucent. The overall appearance is that of a complex, multi-lobulated mass.

Ovarian carcinoma